

## Partners

### Coordinator:

Robert Koch-Institut, RKI  
Berlin, Germany

ROBERT KOCH INSTITUT



### Co-Coordinator:

National Institute for Infectious  
Diseases "L. Spallanzani", INMI  
Rome, Italy



### Associated Partners:

RKI, Germany  
INMI, Italy  
AGES, Austria  
CODA-CERVA, Belgium  
NCIPD, Bulgaria  
HZJZ, Croatia  
SUJCHBO, Czech Republic  
DTU, Denmark  
TA, Estonia  
THL, Finland  
INSERM, France  
DGA, France  
BwLM, Germany  
FLI, Germany  
UMR, Germany  
BNITM, Germany  
AUT, Greece

NCE, Hungary  
ISS, Italy  
IZSLER, Italy  
NVSPL, Lithuania  
RIVM, Netherlands  
NIPH, Norway  
NVI, Norway  
NIPH-NIH, Poland  
NVRI, Poland  
INSA, Portugal  
INC, Romania  
Slovenia BIOEF, Spain  
ISC III, Spain  
FoHM, Sweden  
PHE, United Kingdom  
Erasmus MC, Netherlands

### Collaborating Partners:

IZSPB, Italy  
NKUA, Greece  
SPIEZ, Switzerland  
FOI, Sweden

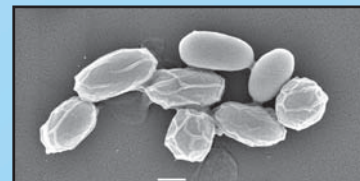


## General Objectives

- ❖ The Joint Action (JA) EMERGE aims to ensure efficient response to serious emergent and re-emergent cross-border events by reinforcing the existing EU network of BSL 3 and BSL 4 laboratories which are already active in the field of identification of dangerous bacterial and viral human pathogens.
- ❖ The JA EMERGE comprises a European network of about 40 diagnostic laboratories focused on risk group 3 and 4 bacteria and viruses.
- ❖ The JA contributes to provide an integrated European laboratory infrastructure and strategy to protect European citizens against exposure to a panel of globally recognized high threat bacteria and viruses.



Filovirus  
(Ebola virus)



*Bacillus anthracis*  
spores

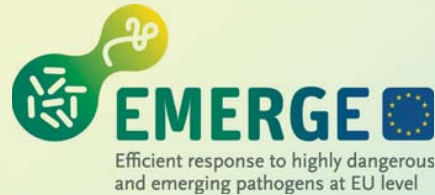
## Specific Objectives

- ❖ **Networking of networks** for laboratory response establishing and strengthening the cooperation between networks
- ❖ **Improving** capabilities for **rapid** laboratory **diagnosis** of new or emerging pathogens (e.g. sample sharing)
- ❖ **Quality Assurance** for laboratory diagnostics by External Quality Assurance Exercises (**EQAE**)
- ❖ **Training** on diagnostics and **biorisk management**
- ❖ All activities are planned for a **direct laboratory response** in relevant outbreak situations and for improvement of **laboratory preparedness** in inter-epidemic phases



## Expected Outcomes

- ❖ Production of agreed protocols or guidelines for outbreak management by interaction with other relevant networks and institutions to avoid duplications and strengthen the interoperability
- ❖ Increase of diagnostic capabilities for high threat pathogens and for diagnostics in outbreak situations
- ❖ A wet-lab will exercise the developed results in situations of cross-border outbreaks
- ❖ Assessment of status quo and recommendations for improvement of laboratory capabilities and quality for diagnosis of highly pathogenic agents
- ❖ Validation and improvement of biorisk management
- ❖ Implementation of rules for the maintenance, further development, and usage of the existing repositories of reference materials
- ❖ Training for improvement of the European capability to detect highly pathogenic agents



EMERGE is an EU funded Joint Action (JA), CHAFEA n° 677 066, coordinated by the Robert Koch-Institut (RKI), Germany, and co-coordinated by the National Institute for Infectious Diseases “L. Spallanzani” (INMI), Italy. It is carried out in close cooperation with 33 Associated Partners and 4 Collaborating Partners from 25 European countries.

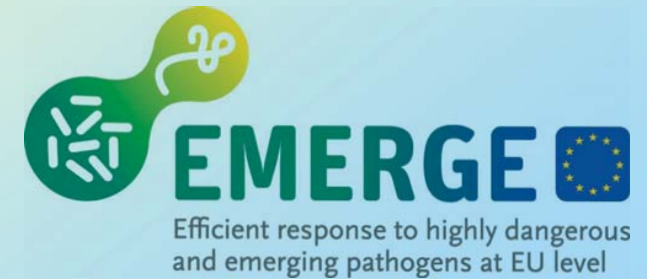
This Joint Action started in June 2015 and is running for 36 months.

### Contact:

Roland Grunow  
Robert Koch-Institut / ZBS 2  
Seestr. 10  
D-13353 Berlin  
Tel.: +49-30-18754-2100  
[GrunowR@rki.de](mailto:GrunowR@rki.de)

### Disclaimer:

This publication has been produced with the support of the European Commission's Consumers, Health, Agriculture and Food Executive Agency (CHAFEA). Its content is the sole responsibility of Robert Koch-Institut, Centre for Biological Threats and Special Pathogens, and can in no way be taken to reflect the views of the CHAFEA or any other body of the European Union.



**Efficient response to  
highly dangerous and  
emerging pathogens  
at EU level**

**EMERGE  
2015 - 2018**

<http://www.emerge.rki.eu>

